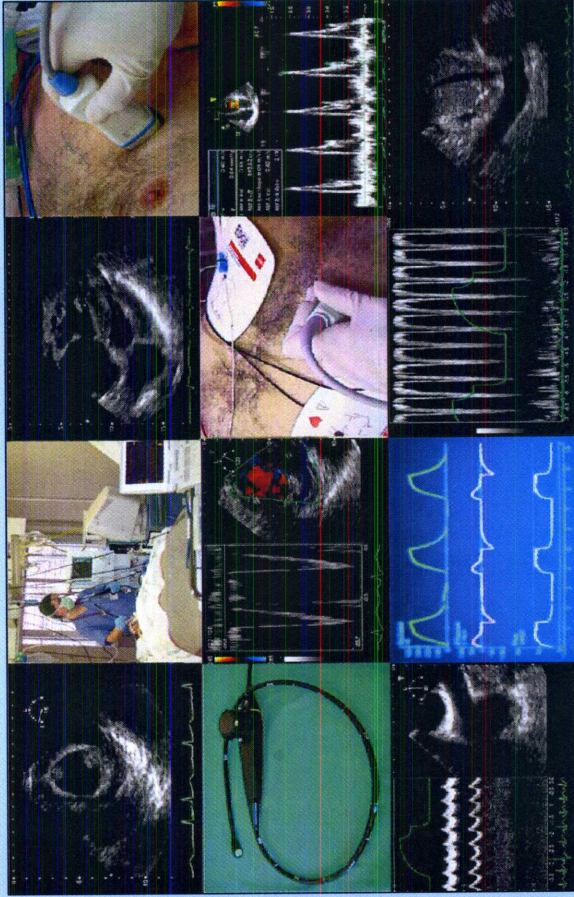




ECHOCARDIOGRAPHY for INTENSIVISTS

Milan (Italy), May 26th and 27th 2008
Milano Convention Centre - MIC



Italian CME Credits applied for



BSE re-accreditation Credits applied for

A course on Echocardiography specifically designed for Intensivists working in General ICUs, this year is split into 2 different training pathways, tailored to different needs of trainees. The first ("ECHO MODULE 1 - FOCUSED ECHOCARDIOGRAPHY IN CRITICAL CARE AND EMERGENCY MEDICINE") is targeted at intensive and critical care physicians who are new to Echocardiography and covers the use of Transthoracic Echocardiography (TTE) in the setting of cardiac arrest/peri-resuscitation, and as a screening tool for the unstable patient in the ICU. This module on basic Echo will include the internationally well-known formats of FEEL (Focused Echocardiography Entry Level) and FATE (Focused Assessment with Transthoracic Echocardiography), and might also be of interest to more Echo-experienced intensivists wishing to make their focused Echo assessments more effective. The second course ("ECHO MODULE 2 - ECHODYNAMICS: HEMODYNAMIC MONITORING WITH ECHOCARDIOGRAPHY") is targeted at physicians who already practice Echocardiography, and wish to learn the speciality-specific use in the critical patient of both Transthoracic (TTE) and Transoesophageal (TEE) Echocardiography in a "hemodynamic fashion", with a goal-oriented approach aimed at providing the clinician with key cardiovascular information to noninvasively manage the hemodynamically unstable patient. Trainees will be able to register separately for a single module or for both modules in combination, depending on their training needs.

The faculty gathers together some of the world's major experts in the use of Echocardiography in ICU, and this course represents the second part of an Echo training course which follows a dedicated E-learning course: participants will have free access to a web-based modular training format in the months preceding the course, so as to maximize their learning and minimize time spent in formal lectures during the course itself. Interactive clinical scenarios, the EmEchoSimTest®, and HOT Sessions, (Hands On Training), therefore represent the core of this course.

Un corso di Ecocardiografia specificamente dedicato agli intensivisti delle Rianimazioni Generali, quest'anno suddiviso in 2 differenti percorsi formativi, ritagliati sulle diverse esigenze dei partecipanti. Un primo percorso ("ECHO MODULE 1 - FOCUSED ECHOCARDIOGRAPHY IN CRITICAL CARE AND EMERGENCY MEDICINE") rivolto agli intensivisti e medici d'urgenza che si accostano per la prima volta all'Ecocardiografia: verrà insegnato un impiego mirato dell'Ecocardiografia Transthoracica (TTE) nel contesto dell'arresto cardiaco / nei setting di "peri-resuscitazione", e come strumento di screening nel paziente instabile emodinamicamente in rianimazione. Il training di questa applicazione "basic" dell'ecocardiografia, alla portata di tutti, conterà dei format già noti a livello internazionale del FEEL (Focused Echocardiography Entry Level) e del FATE (Focused Assessment with Transthoracic Echocardiography), e si rivolge anche a coloro che già impieghino l'Ecocardiografia (intensivisti, emergenzisti e cardiologi) e che vogliono renderne il loro impiego mirato nel malato critico efficace. Un secondo corso ("ECHO MODULE 2 - HEMODYNAMIC MONITORING WITH ECHOCARDIOGRAPHY") sarà invece rivolto agli intensivisti che già praticano routinariamente l'Ecocardiografia, e vogliono apprendere l'impiego specialista-specifico nel paziente critico delle metodiche transthoracica (TTE) e transesofagea (TEE) secondo un approccio "emodinamico", "goal-oriented", rivolto ad ottenere le informazioni cardiocircolatorie chiave per gestire non invasivamente il paziente emodinamicamente instabile. I partecipanti potranno così decidere di iscriversi ad uno solo dei due moduli o ad entrambi a seconda della propria necessità di formazione.

La faculty internazionale è composta da alcuni dei maggiori esperti mondiali nell'impiego dell'Ecocardiografia in Rianimazione, e questo corso rappresenta in pratica la seconda parte di una proposta formativa che comprende anche una specifica struttura di E-learning : i partecipanti al corso avranno accesso gratuito ad un format di training modulare online nei mesi che precederanno il corso, in modo da massimizzare l'apprendimento, e ridurre il numero delle lezioni formali durante il corso. Scenari clinici interattivi, l'EmEchoSimTest®, e HOT Sessions, (Hands On Training), rappresenteranno infatti il nucleo del corso.

FOCUSED ECHOCARDIOGRAPHY in Critical Care & Emergency Medicine (FATE and FEEL)



Echo MODULE 1 - Monday May 26th

(MAX NUMBER OF PARTICIPANTS: 50)

Course Directors: Raoul Breitkreutz, Erik Sloth, G. Via

Part I: e-LEARNING ON US PHYSICS AND PRINCIPLES— "KNOBOLGY" - PITFALLS & ARTIFACTS IN ECHOCARDIOGRAPHY

AVAILABLE from MARCH 30th at www.winfocus.org/e-learning/ECHO-MODULAR

h 8.00 Registration, Welcome and Course Instructions

Part II: BASICS IN TRANSTHORACIC ECHOCARDIOGRAPHY AND APPLICATIONS IN INTENSIVE AND CRITICAL CARE MEDICINE

Chairpersons: D. Taimor, F. Guarracino

h 8.25 INTRODUCTION: DO WE NEED A FOCUSED ECHOCARDIOGRAPHY LIKE FATE AND FEER FOR INTENSIVE CARE MEDICINE AND EMERGENCIES? R. Breitkreutz, E. Sloth

h 8.45 INTERACTIVE CASE PRESENTATIONS R. Breitkreutz, D. Taimor, G. Via

h 9.15 SONOANATOMY OF THE HEART: BASIC TTE VIEWS F. Guarracino

h 9.35 AUTOTEST ON TTE VIEWS

h 9.50 FATE APPROACH IN THE ICU (FOCUSED ASSESSMENT WITH TRANSTHORACIC ECHOCARDIOGRAPHY) E. Sloth

h 10.10 Coffee break

Part III: OVERALL ASSESSMENT OF CARDIAC FUNCTION AND VOLUME STATUS

Chairpersons: F. Bilotta, H. Steiger

h 10.30 PATHOLOGICAL FINDINGS WITH INTERACTIVE CASES, TECHNIQUE OF PERICARDIAL PUNCTURE H. Steiger

h 10.50 OVERALL ASSESSMENT OF VENTRICULAR FUNCTION, VOLUME STATUS, GROSS VALVULAR DYSFUNCTION G. Via

h 11.10 POTENTIAL PITFALLS & LIMITATIONS OF FOCUSED ECHOCARDIOGRAPHY S. Price

ALS-CONFORMED EMERGENCY ECHOCARDIOGRAPHY

Part IV:

h 11.30 AN ALS-CONFORMED ALGORITHM FOR RESUSCITATION AND PERI-RESUSCITATION CARE: FEER (FOCUSED ECHOCARDIOGRAPHY EVALUATION IN RESUSCITATION) R. Breitkreutz

h 11.50 DISCUSSION

----- h 12.10 – 13.10 Lunch Break (and briefing for instructors) -----

Part V: HOT SESSION AND SIMULATION

Chairpersons: R. Breitkreutz, E. Sloth

h 13.10 HANDS ON TRAINING (HOT): BASIC TTE VIEWS, ALS MEGACODE (10 workstations with: healthy volunteers, tutorial laptop station, CPR simulation with ResusciAnne Mannequins)

F. Bilotta, R. Breitkreutz, B. Cholley, K. Dippel, F. Guarracino, S. Price, E. Sloth, H. Steiger, D. Taimor, G. Via, E. Catena

h 15.40 INTERACTIVE CASE PRESENTATIONS F. Bilotta, H. Steiger, E. Sloth

h 16.10 Coffee Break

h 16.30 HANDS ON TRAINING (HOT): SUBCOSTAL 4 CHAMBER VIEW, WITH PATHOLOGICAL CLIPS, FEER WITH TIMING DURING CPR, FATE PROTOCOL (10 workstations with: healthy volunteers, tutorial laptop stations)

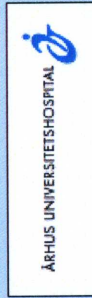
F. Bilotta, R. Breitkreutz, B. Cholley, K. Dippel, F. Guarracino, S. Price, E. Sloth, H. Steiger, D. Taimor, G. Via, E. Catena

EMECHOSIMTEST®

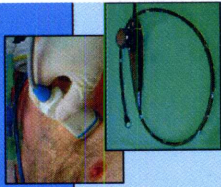
h 19.00 POST COURSE TEST (MCQ), PRIZE TO BEST ECHOSIMTEST® PERFORMER

h 19.30 END OF COURSE, ATTENDANCE CERTIFICATE DISTRIBUTION

A joint project of the World Interactive Network Focused On Critical UltraSound (WINFOCUS), www.winfocus.org – the Emergency Ultrasound working group of the University Hospital, Frankfurt am Main, Germany – the FATE Group, Aarhus University Hospital, Skejby, Denmark – the University Hospital Fondazione IRCCS Policlinico San Matteo, Pavia, Italy – the SMART Congress, Milan.



"ECHODYNAMICS": Hemodynamic Monitoring with Echocardiography



Echo MODULE 2 - Tuesday May 27th

(MAX NUMBER OF PARTICIPANTS: 50)

Course Directors: S. Price, D. Talmor, F. Guarracino

Part I: e-LEARNING ON LEFT & RIGHT VENTRICLE, HEMODYNAMICS, LV DIASTOLIC FUNCTION, LEFT ATRIAL PRESSURE, VALVULAR DISEASE

AVAILABLE from MARCH 30th at www.winfocus.org/e-learning/ECHO-MODULAR

h 8.00 Registration, Welcome and Course Instructions

Part II: REFRESHER OF KEY HEMODYNAMIC TOPICS

Chairpersons: F. Guarracino, B. Cholley

h 8.20 NONINVASIVE CARDIAC OUTPUT ASSESSMENT, PAP ESTIMATION B. Cholley

h 8.40 - *Interactive Case*

h 8.50 HYPOVOLAEMIA AND VOLUME RESPONSIVENESS G. Via

h 9.10 - *Interactive Case*

h 9.20 LEFT ATRIAL PRESSURE ESTIMATION F. Bilotta

h 9.40 - *Interactive Case*

h 9.50 TAMPONADE: SPONTANEOUS RESPIRATION & MECHANICAL VENTILATION S. Price

h 10.10 - *Interactive Case*

h 10.20 Coffee Break

Part III: INTENSIVE AND CRITICAL CARE SCENARIOS

Chairpersons: S. Price, E Sloth

h 10.40 DIFFERENTIAL DIAGNOSIS IN THE SHOCKED PATIENT D. Talmor

h 11.00 SEPTIC SHOCK G. Via

h 11.20 - *Interactive Case*

h 11.35 ACUTE COR PULMONALE E. Catena

h 11.55 - *Interactive Case*

h 12.10 CHEST TRAUMA P. Vignon

h 12.30 - *Interactive Case*

h 12.45 – 13.45 Lunch Break (and briefing for instructors)

Chairpersons: D. Talmor, P. Vignon

h 13.45 COMPLICATED ACUTE MYOCARDIAL INFARCTION F. Guarracino

h 14.05 - *Interactive Case*

h 14.20 PULMONARY EDEMA: CARDIOGENIC VS NON CARDIOGENIC S. Price

h 14.40 - *Interactive Case*

Part V: HOT SESSION AND SIMULATION

Chairpersons: F. Bilotta, D. Talmor

h 14.55 HANDS ON TRAINING (HOT) WITH TTE: LEFT AND RIGHT VENTRICLE ASSESSMENT
(10 workstations with: healthy volunteers; laptop stations with case studies)

F. Bilotta, R. Breikreutz, E Catena, B. Cholley, F. Guarracino, S. Price, E. Sloth, D. Talmor, H. Steiger, P Vignon

h 16.25 Coffee Break

h 16.40 HANDS ON TRAINING (HOT) WITH TTE: CARDIAC OUTPUT, LV FILLING PRESSURE ASSESSMENT, VOLUME STATUS ASSESSMENT

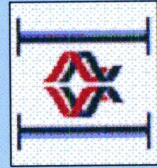
(10 workstations with: healthy volunteers; laptop stations with case studies)
F. Bilotta, R. Breikreutz, E Catena, B. Cholley, F. Guarracino, S. Price, E. Sloth, H Steiger, D. Talmor, G. Via

EMECHOSIMTEST®

h 19.10 POST COURSE TEST (MCQ), PRIZE TO INTERACTIVE SESSIONS WINNER

h 19.40 END OF COURSE, ATTENDANCE CERTIFICATE DISTRIBUTION

A joint project of the World Interactive Network Focused On Critical UltraSound (WINFOCUS), www.winfocus.org - the Echo Department of the Royal Brompton Hospital, London, UK - the University Hospital IRCCS Policlinico San Matteo Foundation, Pavia, Italy – the SMART Congress, Milan, Italy.



Course Directors

Breitkreutz Raoul (Frankfurt, Germany)
Erik Sloth (Aarhus, Denmark)
Guarracino Fabio (Pisa, ITALY)
Price Susanna (London, UK)
Taimor Daniel (Boston, USA)
Via Gabriele (Pavia, ITALY)

Organizing Committee

Braschi Antonio (Pavia, ITALY)
Neri Luca (Milan, ITALY)
Storti Enrico (Milan, ITALY)
Via Gabriele (Pavia, ITALY)

Scientific Secretariat

Via Gabriele
Servizio di Anestesia e Rianimazione I
Fondazione IRCCS Policlinico S. Matteo - PAVIA
Tel: +39 347 0560623 Mail: gcvia@libero.it

Organizing Secretariat

START PROMOTION
Via M. Macchi, 50 - 20124 Milano
Tel: +39 02 67071383 FAX +39 02 67072294
www.startpromotion.it

Registration and Fees

The Course includes a **Pre-Course online** (www.winfocus.org/le-learning/ECHO-MODULAR). Only a maximum number of **50 participants** for both **Echo Module 1** and **Echo Module 2** will be accepted, in order to obtain a trainee to trainer ratio for the hands-on sessions of no more than **Italian Continuing Education in Medicine Accreditation (ECM)** has been applied for. **British Society of Echocardiography re-accreditation credits** has been applied for.



Languages spoken during the course will be **Italian** and **English**.
Simultaneous translation will be provided.

Registration Fee:

- **Echo Module 1** 400,00 € (330 € + 20% VAT, IVA)
- **Echo Module 2** 400,00 € (330 € + 20% VAT, IVA)
- **Echo Module 1 & 2** 700,00 € (580 € + 20% VAT, IVA)

Registration Fees include:

- Access to pre-Course online material
- Attendance to scientific sessions (lectures, case studies, HOT sessions)
- Italian Continuing Education in Medicine (ECM) Accreditation, + BSE Credits
- Course Kit
- Coffee Breaks

Registration should be made online at the website www.startpromotion.it, before **May the 8th 2008**. Registration will be confirmed on receipt of payment, places will be allocated on a "first come, first served" basis. In case of cancellation before April the 28th, 50% of the registration fee will be refunded. After that date, no reimbursement will be made. **Participants to module 2 are required to bring a pocket calculator** for the interactive sessions and MCQs)

Registration fees can be paid as follows:

- Non transferable banker's cheque (Assegno Bancario non trasferibile)
- Banker's draft (Assegno Circolare)
- Post office money order (Vaglia postale)
- Banker's transfer to: START PROMOTION Srl - INTESA SANPAOLO Spa, Agenzia di Pavia, viale Cesare Battisti, 18 - CIN X, ABI 03069, CAB 11310, C/C 000027269163, BIC Code BCITIT33702, IBAN IT21X030 6911 3100 0002 7269 163.

Further detailed instructions for registration form filling and payment will be at www.startpromotion.it.

Venue

Milano Convention Centre - MIC
Main entrance, Via Gattamelata - 20145 Milano - Tel. +39 02 49977134

Hotel Accommodation

For information concerning hotel accommodation contact Organizing Secretariat before **April 21st**.

Travel Information & Public Transport



Milano Linate Airport

Take bus no. 73 in the "National Arrivals Exit" area all the way to the terminal of Piazza San Babila. Go down into the Metro. Here take the Red Line 1 (Rho Fiera Milano direction) to "Amendola Fiera" - 1 km from MIC - or get off at "Cadorna", leave the Metro, switch to the suburban railway line S1/S4 and get off at "Domodossola" (400 m from MIC).

Milano Malpensa Airport. The "MALPENSA EXPRESS" train service will take you directly from the airport to the centre of Milan in 40 minutes, arriving at the Ferrovie Nord "Cadorna" station. Here take the Metro Red Line 1 (Rho Fiera Milano direction) to "Amendola Fiera" - 1 km from MIC. Alternatively, take the suburban railway line S1/S4 and get off at "Domodossola" (400 m from MIC).

Orio al Serio Airport

The "AUTOSTRADALE" or "AIR PULLMAN" bus service will take you directly from the airport to Milan Central Station in 60 minutes; then take the Metro Green Line 2 (Abbiategrosso direction) and get off at "Cadorna". Here take the Red Line 1 (Rho Fiera Milano direction) to "Amendola Fiera" - 1 km from MIC - or get off at "Cadorna", leave the Metro, switch to the suburban railway line S1/S4 and get off at "Domodossola" (400 m from MIC).



Central Station - Garibaldi Station. Take the **Metro Green Line 2 (Abbiategrosso direction)** and get off at "Cadorna". Here take the Metro Red Line 1 (Rho Fiera Milano direction) to "Amendola Fiera" - 1 km from MIC - or leave the Metro, switch to the suburban railway line S1/S4 and get off at "Domodossola" (400 m from MIC).

Cadorna Station. Take the Metro Red Line 1 (Rho Fiera Milano direction) to "Amendola Fiera" - 1 km from MIC. Alternatively, take the suburban railway line S1/S4 and get off at "Domodossola" (400 m from MIC).



By Car. From any of the ring roads circling Milan follow the signs to Fieramilanocity, or to any of the large Park & Ride car parks located close to these Metro stops: Cascina Gobba (1800 cars), Green Line 2 - San Donato (1800 cars), Yellow Line 3 - Farnegosta (3000 cars), Green Line 2 - Bisceglie (1900 cars), Red Line 1 - Lampughnano (2000 cars), Red Line 1.



Public Transport

Free Bus Service During the SMART Congress (May 28-29-30), a free bus service will be all-day available, from opening to closing of the scientific sessions, between Porta Metropolitan entrance (Amendola Fiera underground station, Red Line 1) and Porta Gattamelata main entrance. This distance would take approximately 20 min by foot. To encourage the use of public transport by visitors and exhibitors of the Fiera Milano, a **daily urban network ticket** will give them unlimited use of the entire public transport system (trams, buses and underground) for 24 hours from punching, for just **3,00Euros**. This ticket is on sale at all the ATM outlets and can only be used during exhibitions.

Underground The Milan Underground has three lines: Red line (MM1) - Green Line (MM2) - Yellow Line (MM3). See the map at www.nbtis.it/milano/mappa_metropolitana_1.htm. **Red Line 1:** Get off at "Amendola Fiera" - 1 km from MIC - or stop at "Cadorna", leave the Metro, switch to the suburban railway line S1/S4 and get off at "Domodossola" (400 m from MIC). **Green Line 2:** Get off at "Cadorna", leave the Metro, switch to the suburban railway line S1/S4 and get off at "Domodossola" (400 m from MIC). Alternatively, switch to the Red Line 1 (Rho Fiera Milano direction) and get off at "Amendola Fiera" - 1 km from MIC. **Yellow Line 3:** Get off at "Duomo", switch to the Red Line 1 (Rho Fiera Milano direction) and get off at "Amendola Fiera" - 1 km from MIC. Alternatively, stop at "Cadorna", leave the Metro, switch to the suburban railway line S1/S4 and get off at "Domodossola" (400 m from MIC). **Surface transport.** You can also reach Milano Convention Centre by surface transport. Tram no. 16 (piazza VI Febraro or largo Domodossola stops), Tram no. 27 (piazza VI Febraro terminal). Bus no. 78 (via Colleoni stop), Tram no. 1 and no. 33, bus no. 43 and no. 57 stopping on the corner between corso Sempione and via Domodossola. **Taxi service.** A radiotaxi service is available at the following telephone numbers: 02 8585; 02 4040; 02 8383; 02 6969.



GE Healthcare

Sponsored by