



CLINICA OCULISTICA
DIPARTIMENTO DI SCIENZE CLINICO-CHIRURGICHE,
DIAGNOSTICHE E PEDIATRICHE

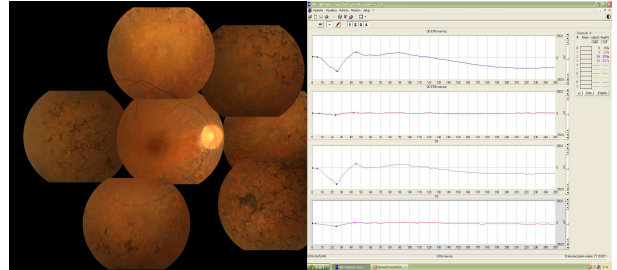
UNIVERSITA' DEGLI STUDI DI PAVIA
FONDAZIONE I. R. C. C. S. POLICLINICO S. MATTEO
P.le Golgi, 19 27100 PAVIA
Tel. 0382 526213 - Fax 0382 527006

Segreteria:

Paolo Emilio Bianchi
Professor of Ophthalmology
Head of Pavia Ophthalmic Clinic

Giulio Ruberto
Department of Ophthalmology
Electrophysiology chief of service

IRCCS San Matteo Hospital
Via Golgi, 19
27100 Pavia, Italy



'GENOTYPE-PHENOTYPE CORRELATION IN MACULAR DYSTROPHY'

For info:

lab.elettrofisiologia@smatteo.pv.it

Dr. Kaoru Fujinami

Pavia on 28th of October 2013

by Erica Riso/ Patrizia Piccinini



Dr. Kaoru Fujinami *

* Consultant Ophthalmologist
Department of Ophthalmology
National Hospital Organization, Tokyo Medical Center

Principal Investigator
Laboratory of Visual Physiology,
Division for Visual Research,
National Institute of Sensory Organs,
Tokyo

Research Associate
Genetics
UCL Institute of Ophthalmology,
11-43 Bath Street, London, EC1V 9EL, UK
k.fujinami@ucl.ac.uk

Invited lecture
Department of Ophthalmology
at IRCCS San Matteo Hospital in Pavia
on 28th of October 2013

