



Fondazione IRCCS  
Policlinico San Matteo

Sistema Socio Sanitario



Regione  
Lombardia

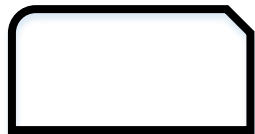
# ORGANIGRAMMA POAS 2022-2024

## AGGIORNAMENTI 2025

(Rev. 4 – DICEMBRE 2025)



ORGANI AZIENDALI



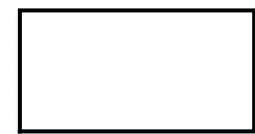
DIREZIONI



DIPARTIMENTI GESTIONALI



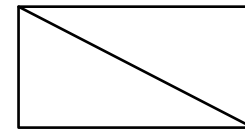
DIPARTIMENTI FUNZIONALI



DIPARTIMENTI INTERAZIENDALI



STRUTTURE COMPLESSE



STRUTTURE SEMPLICI DIPARTIMENTALI



STRUTTURE SEMPLICI



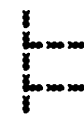
NUCLEI/COMITATI/ALTRE FUNZIONI



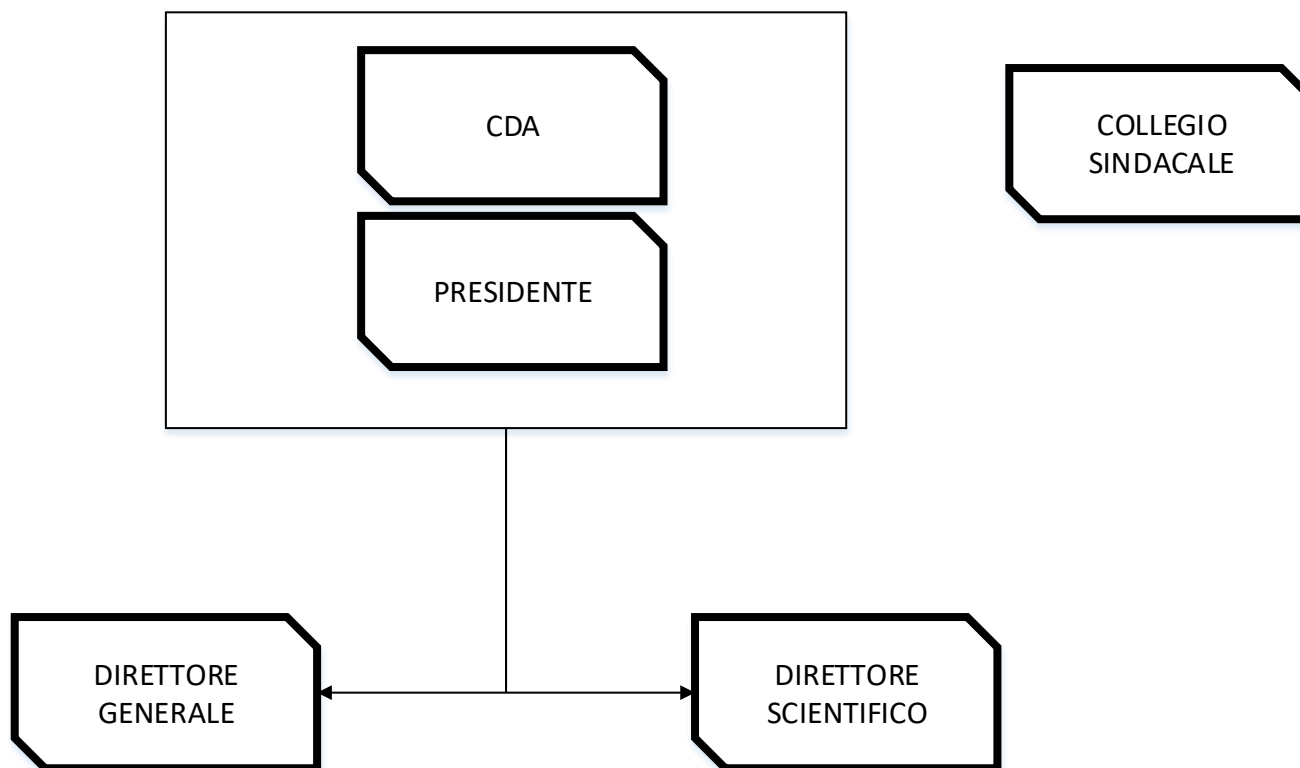
DIPENDENZA GERARCHICA

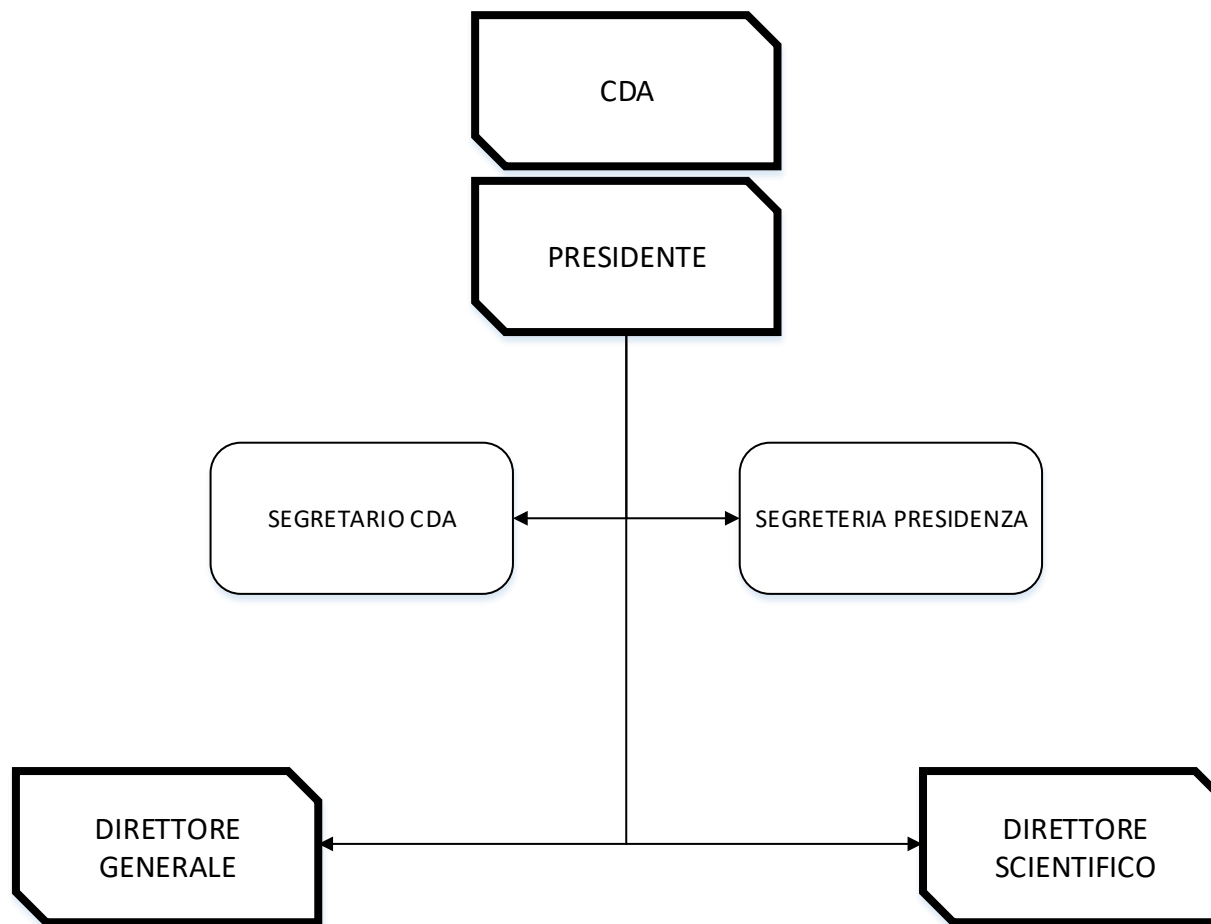


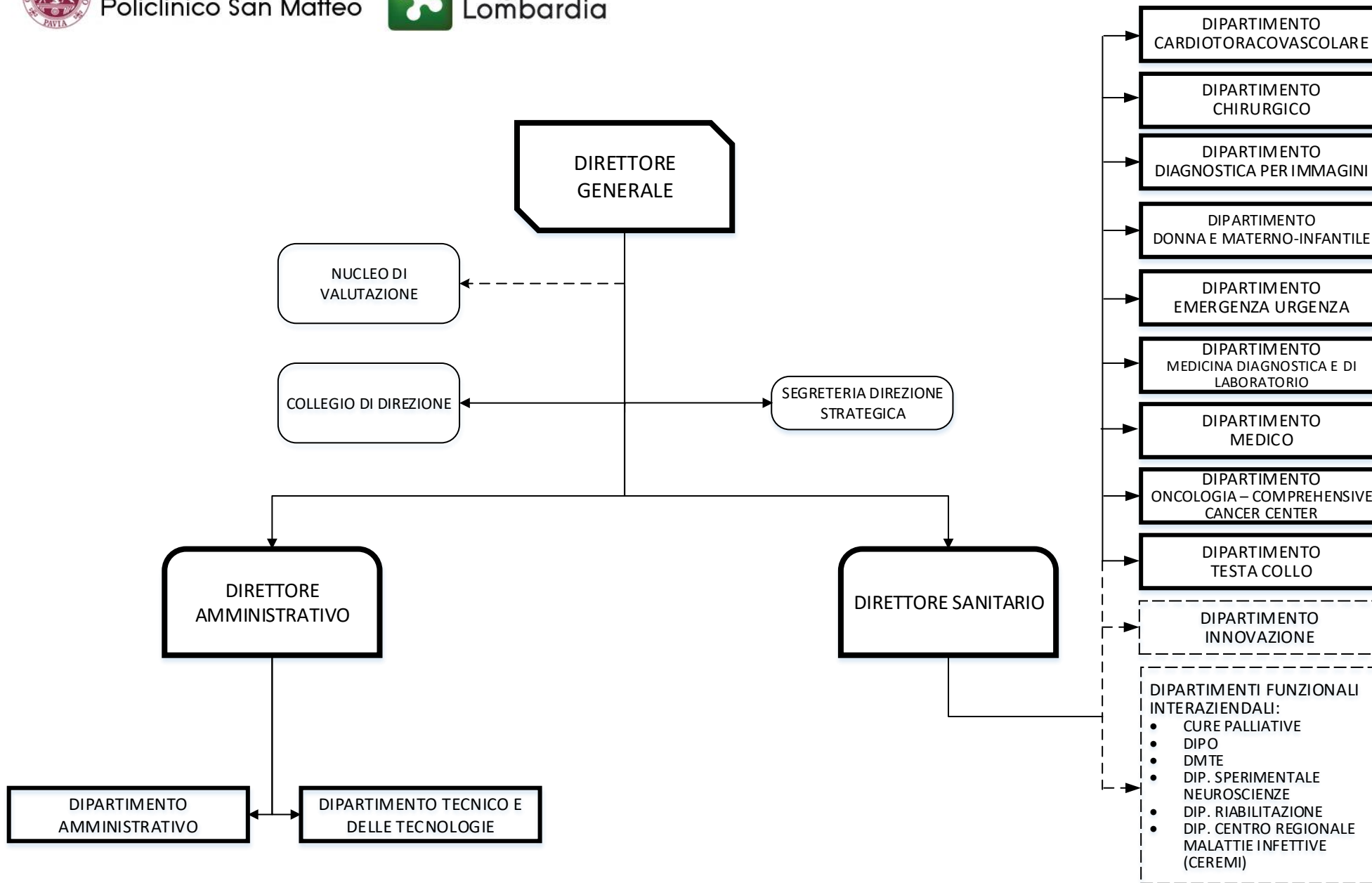
STAFF DI UNA DIREZIONE

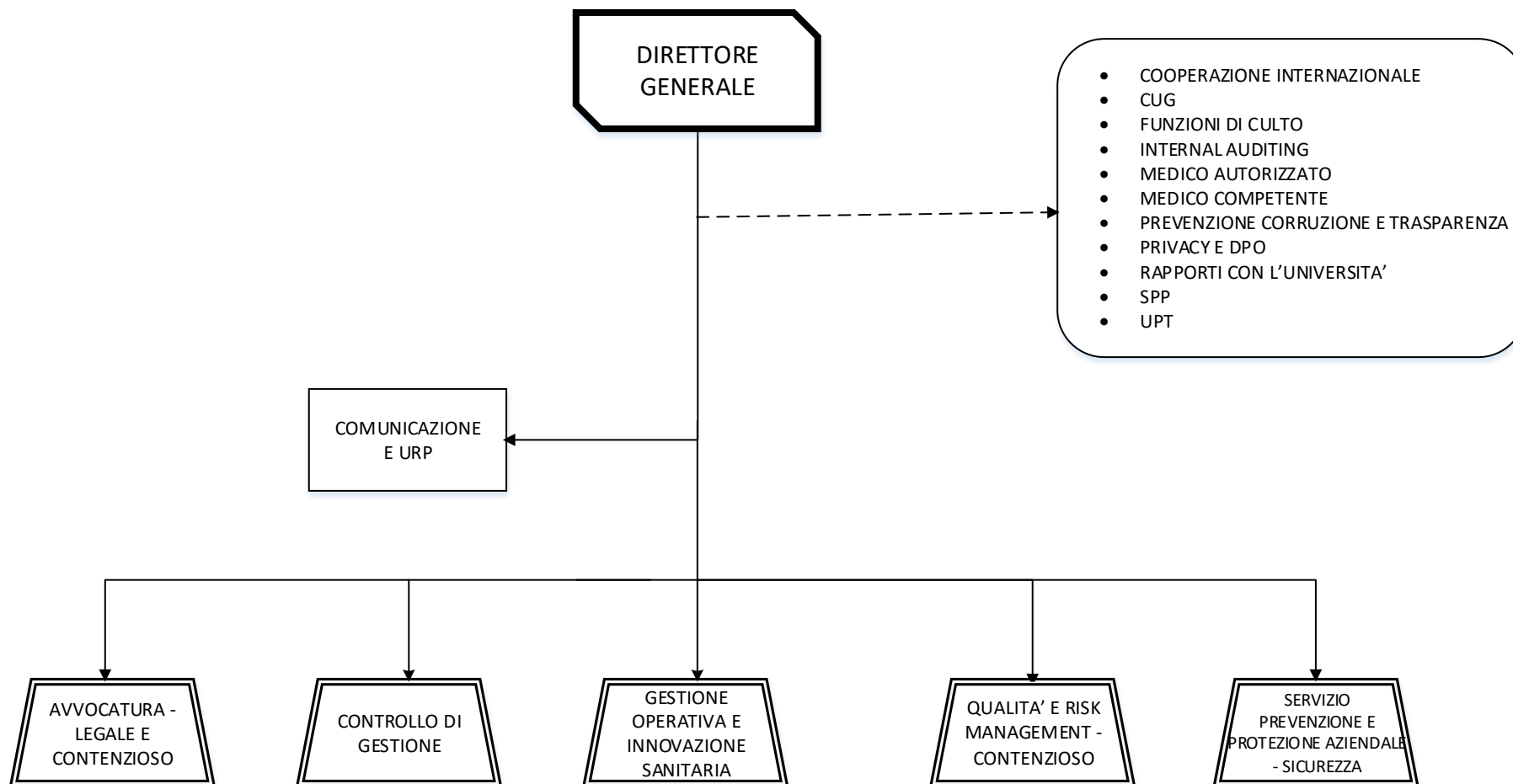


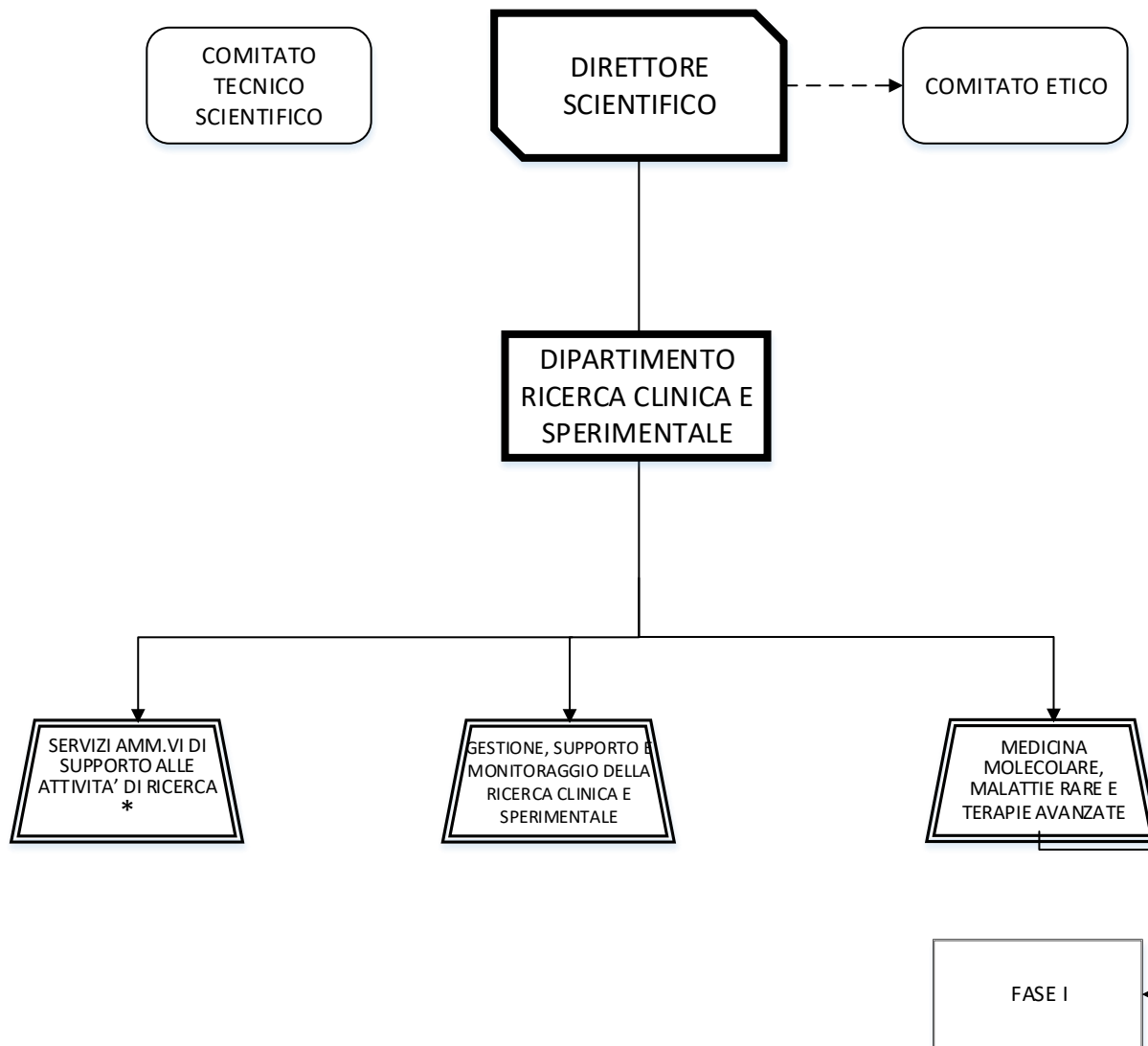
RELAZIONI DIPARTIMENTI  
FUNZIONALI



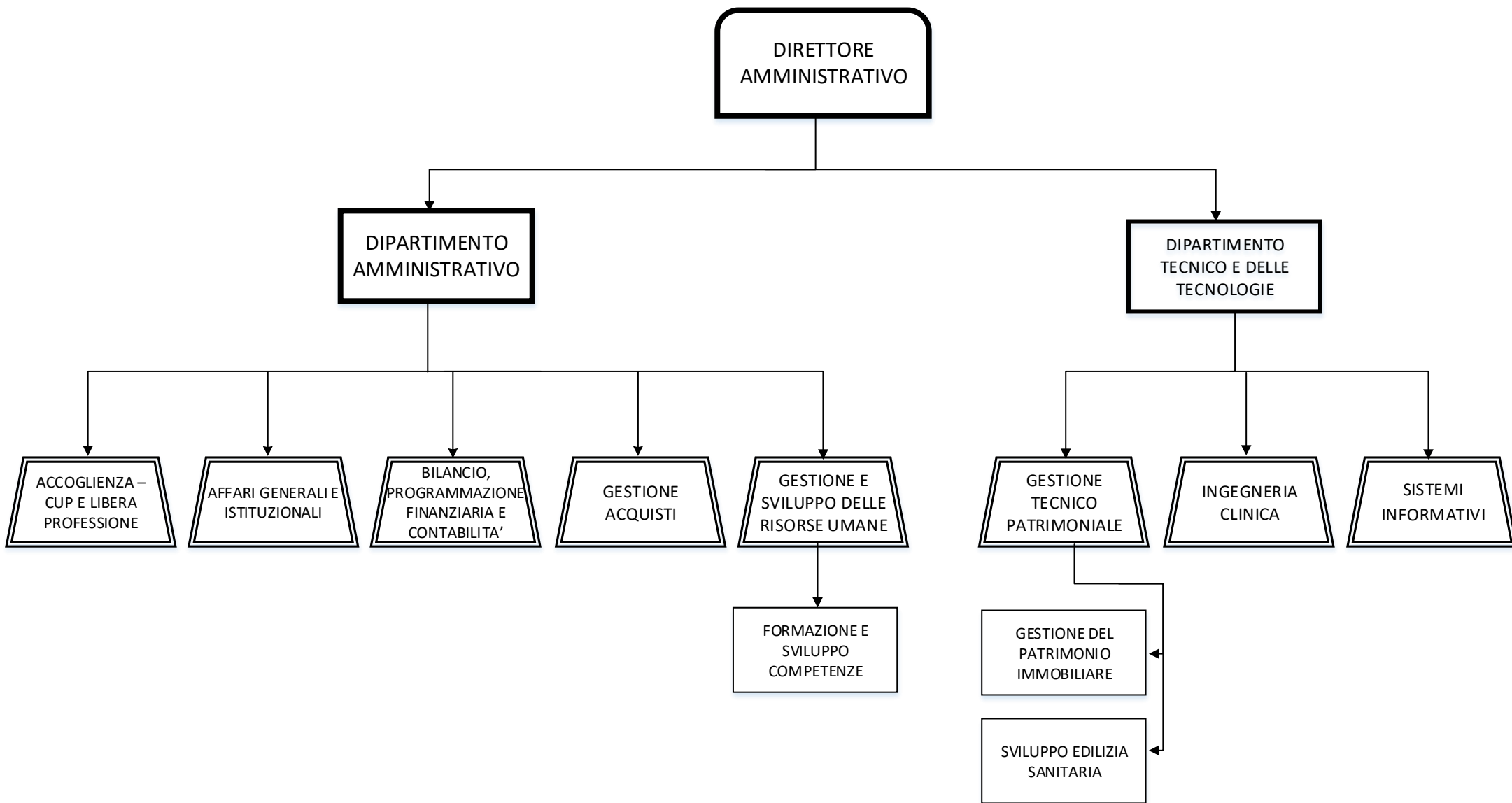


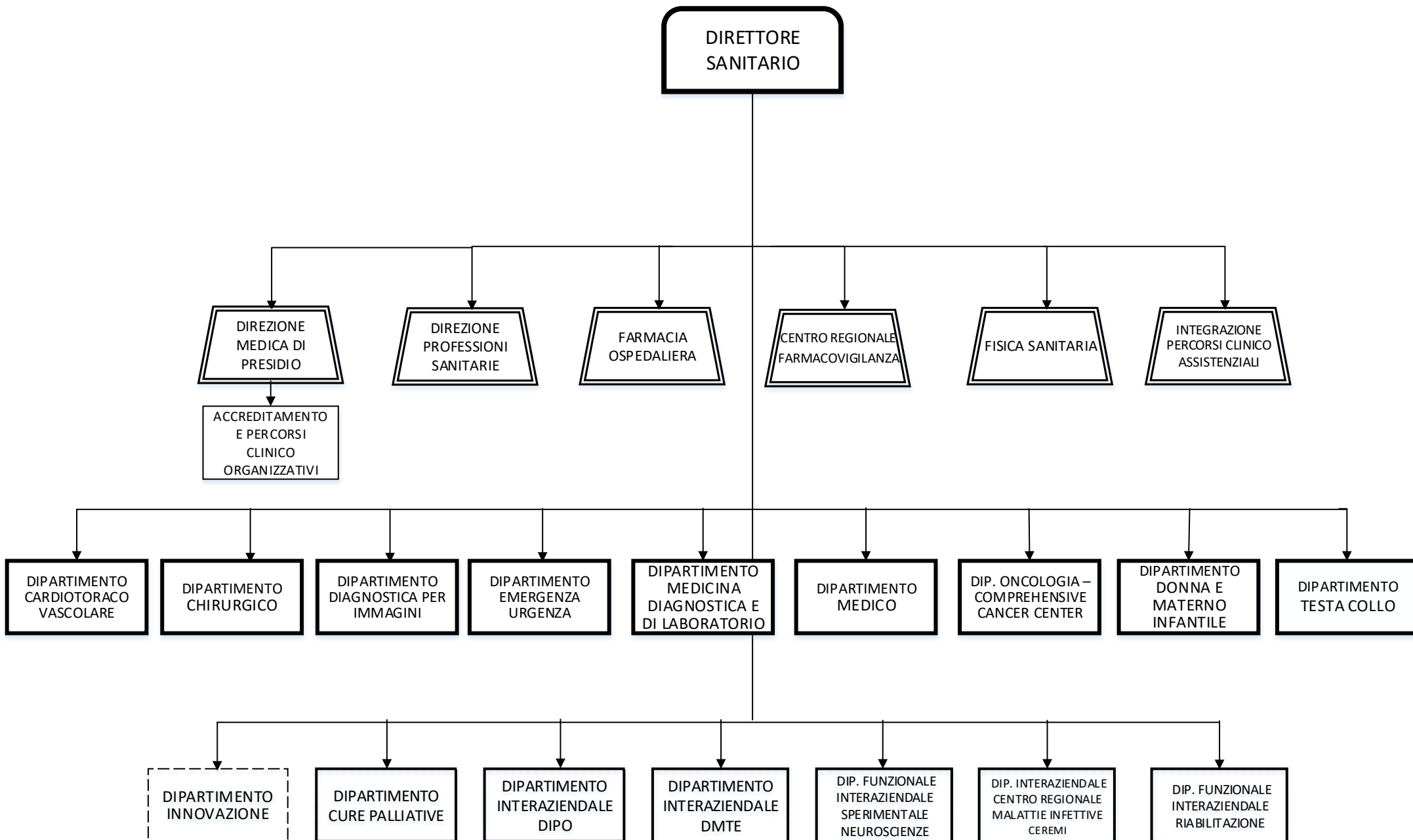


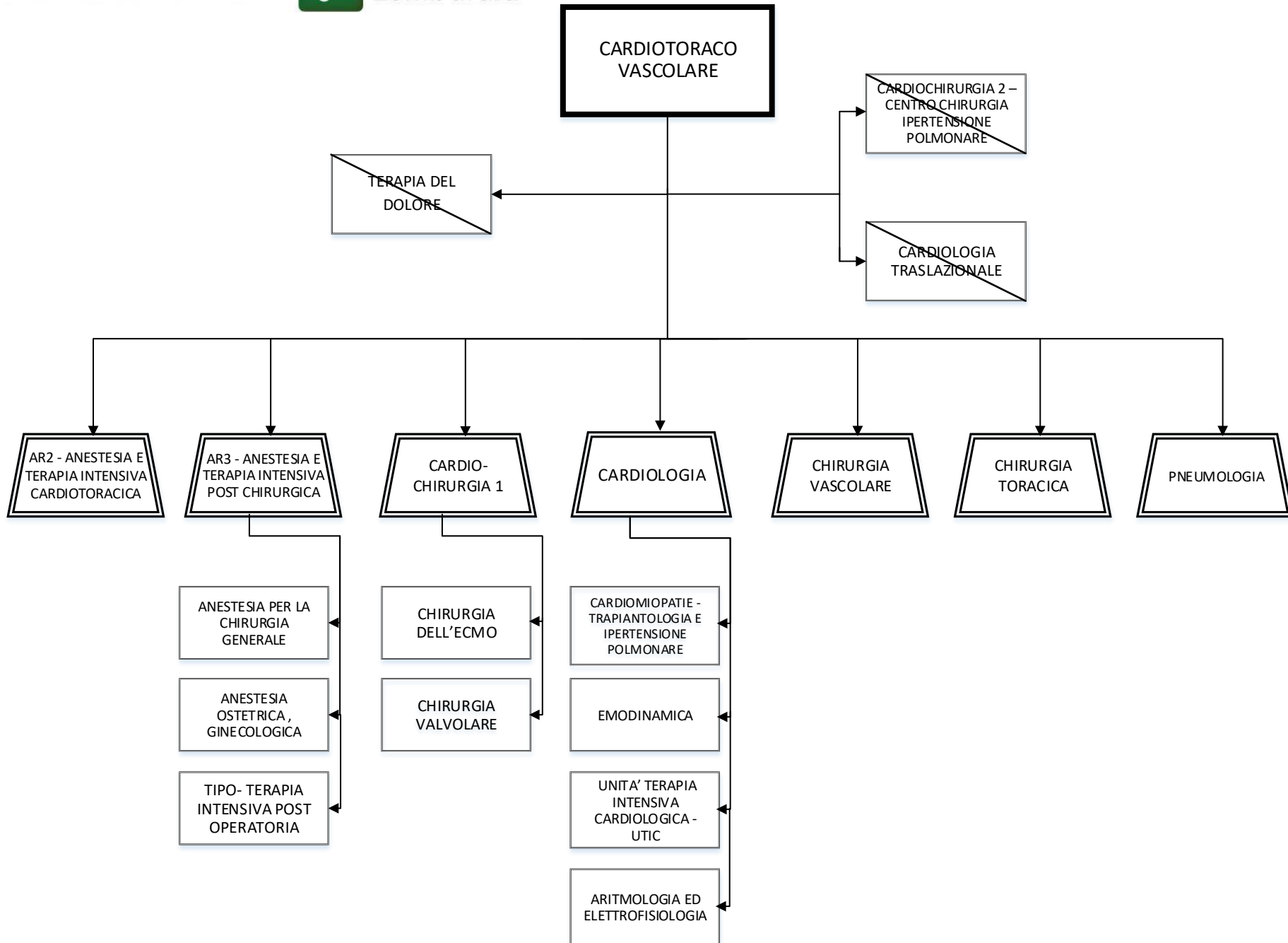


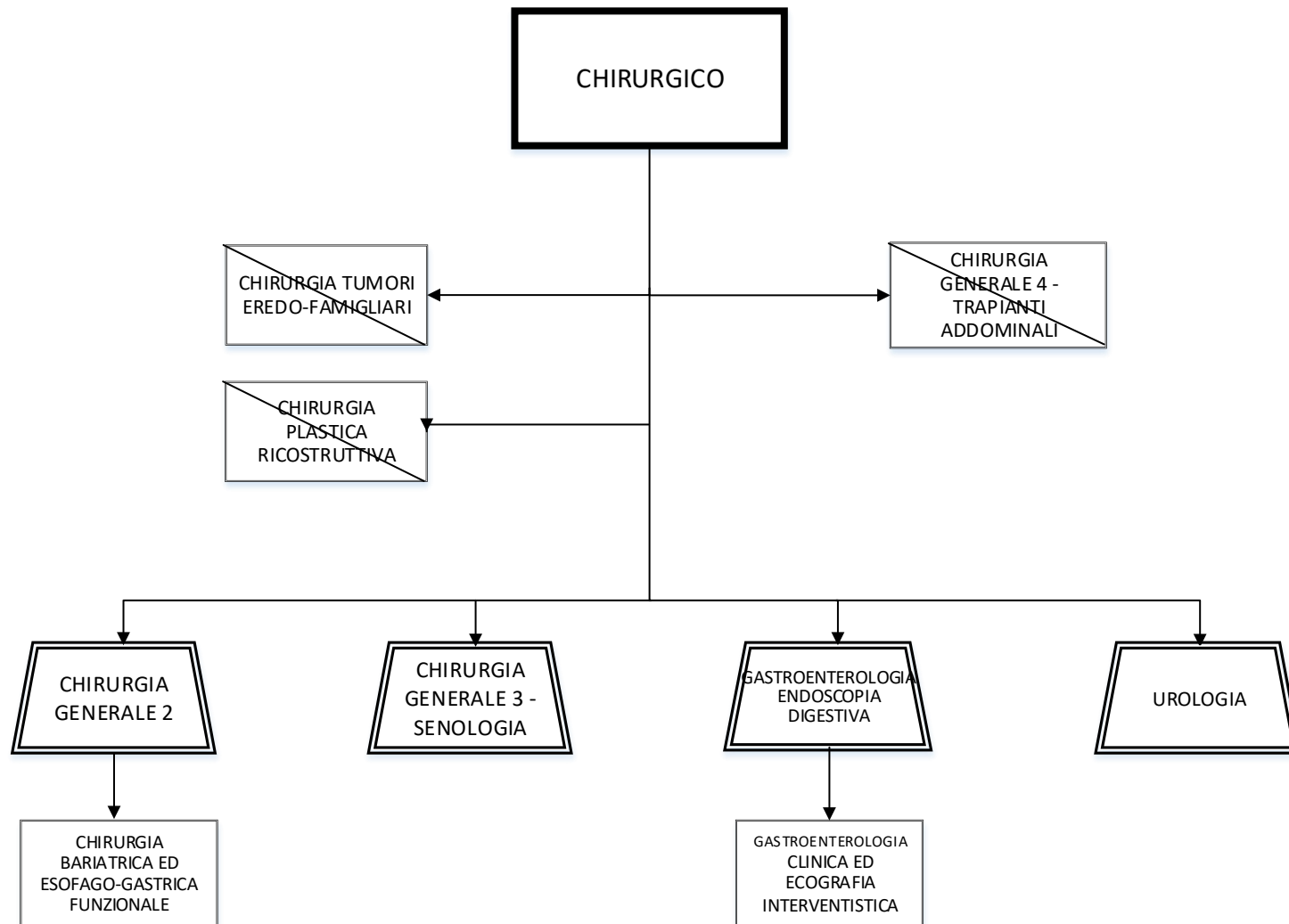


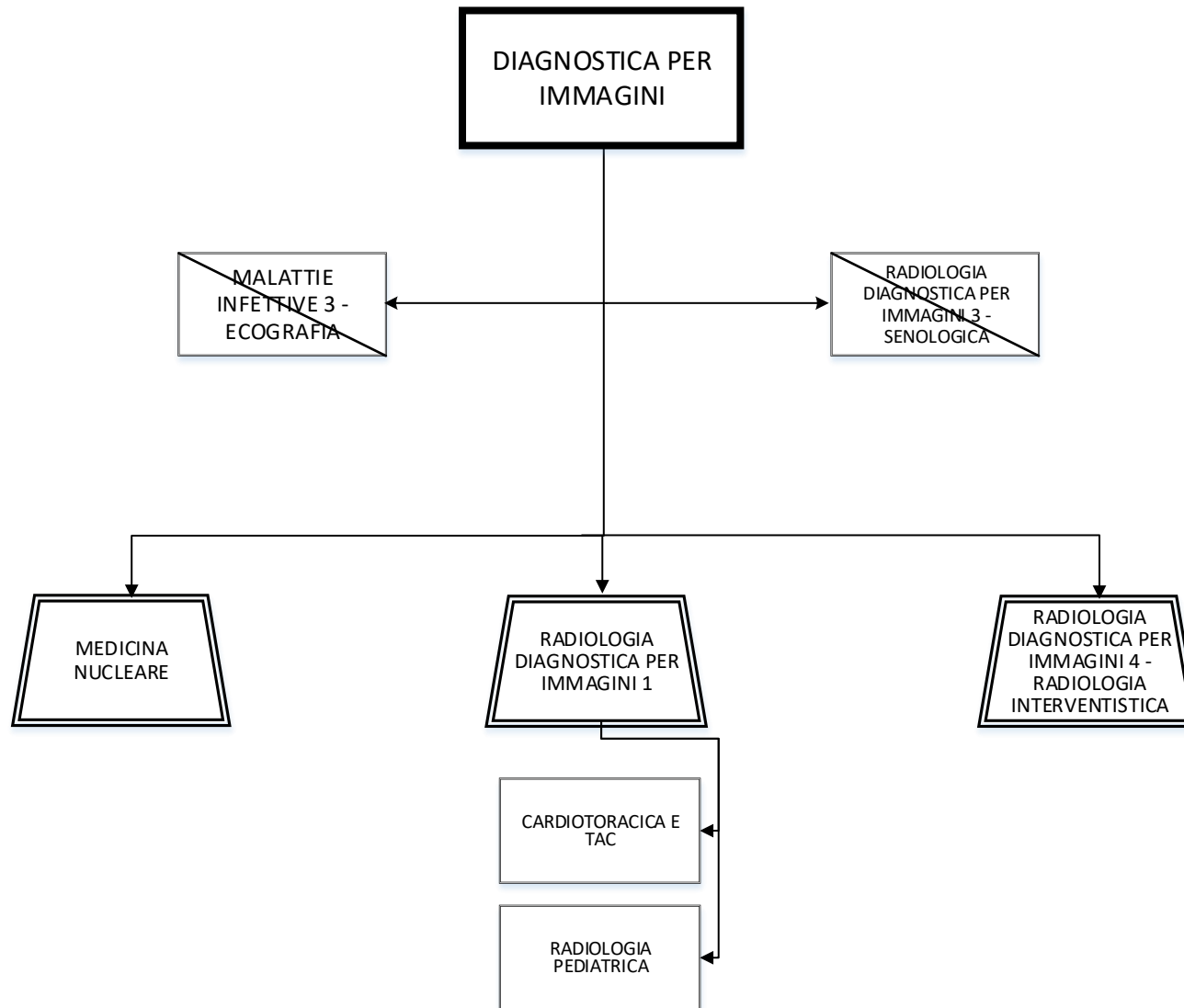
\* SC CON AFFERENZA FUNZIONALE AL DIPARTIMENTO AMMINISTRATIVO

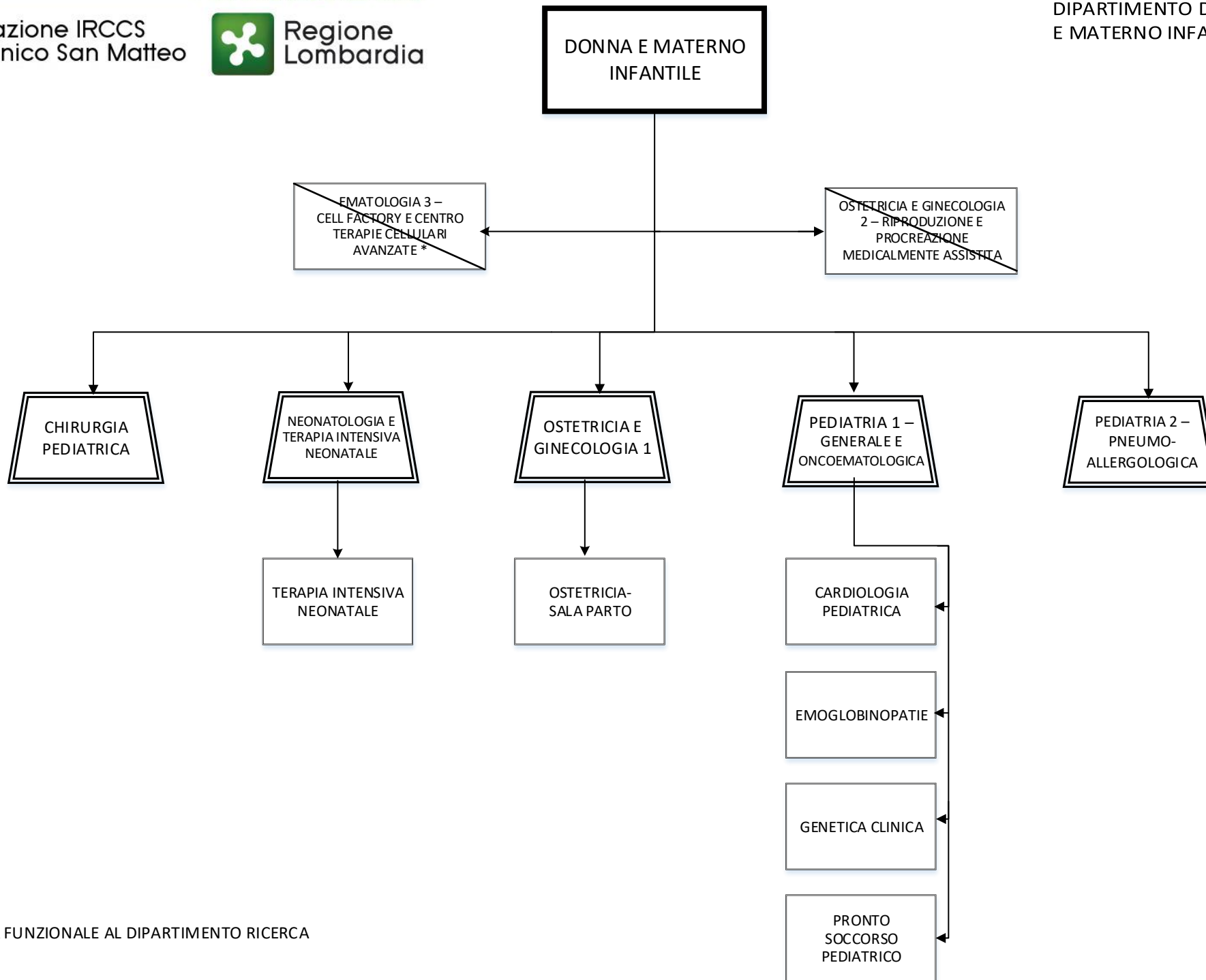




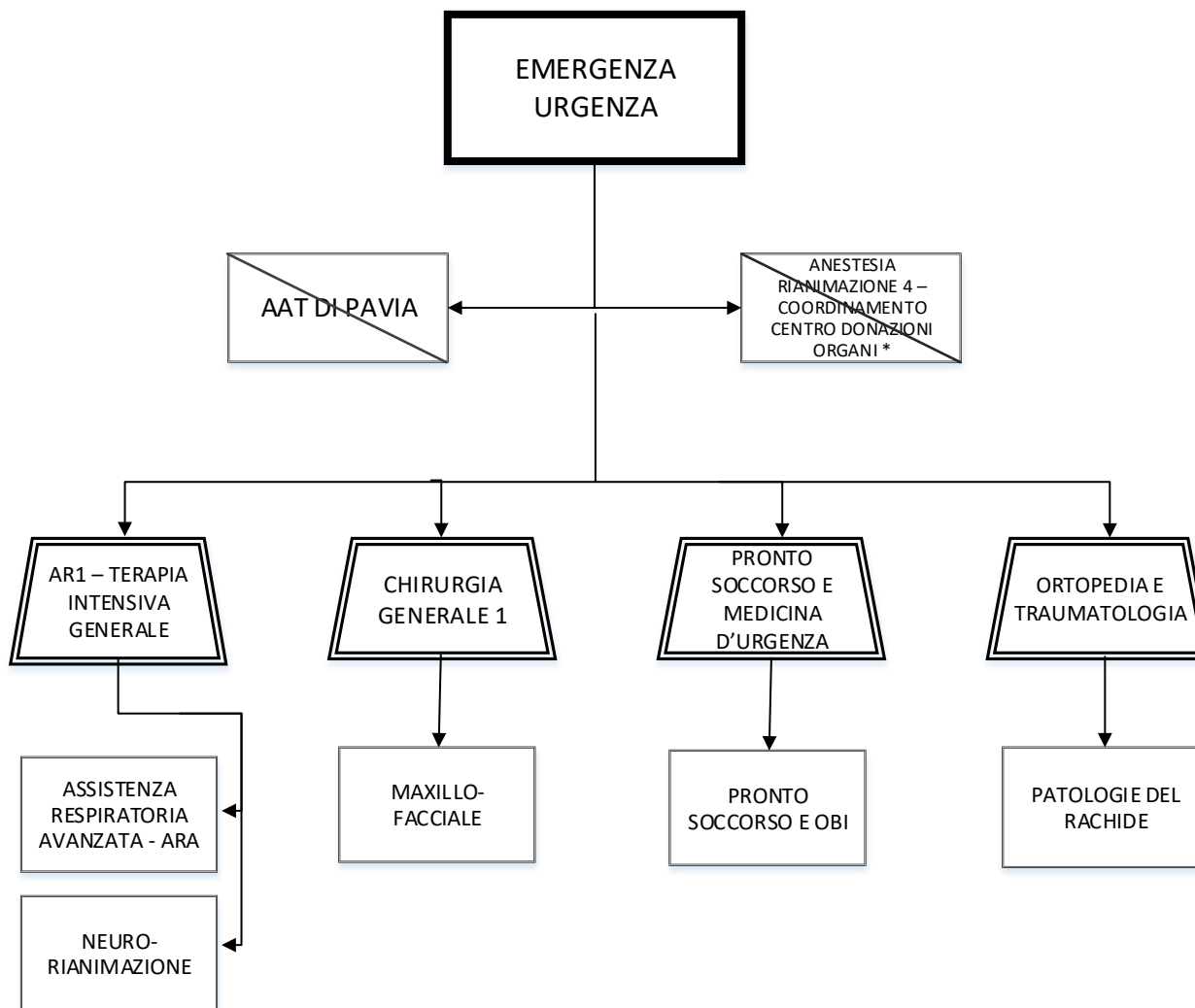


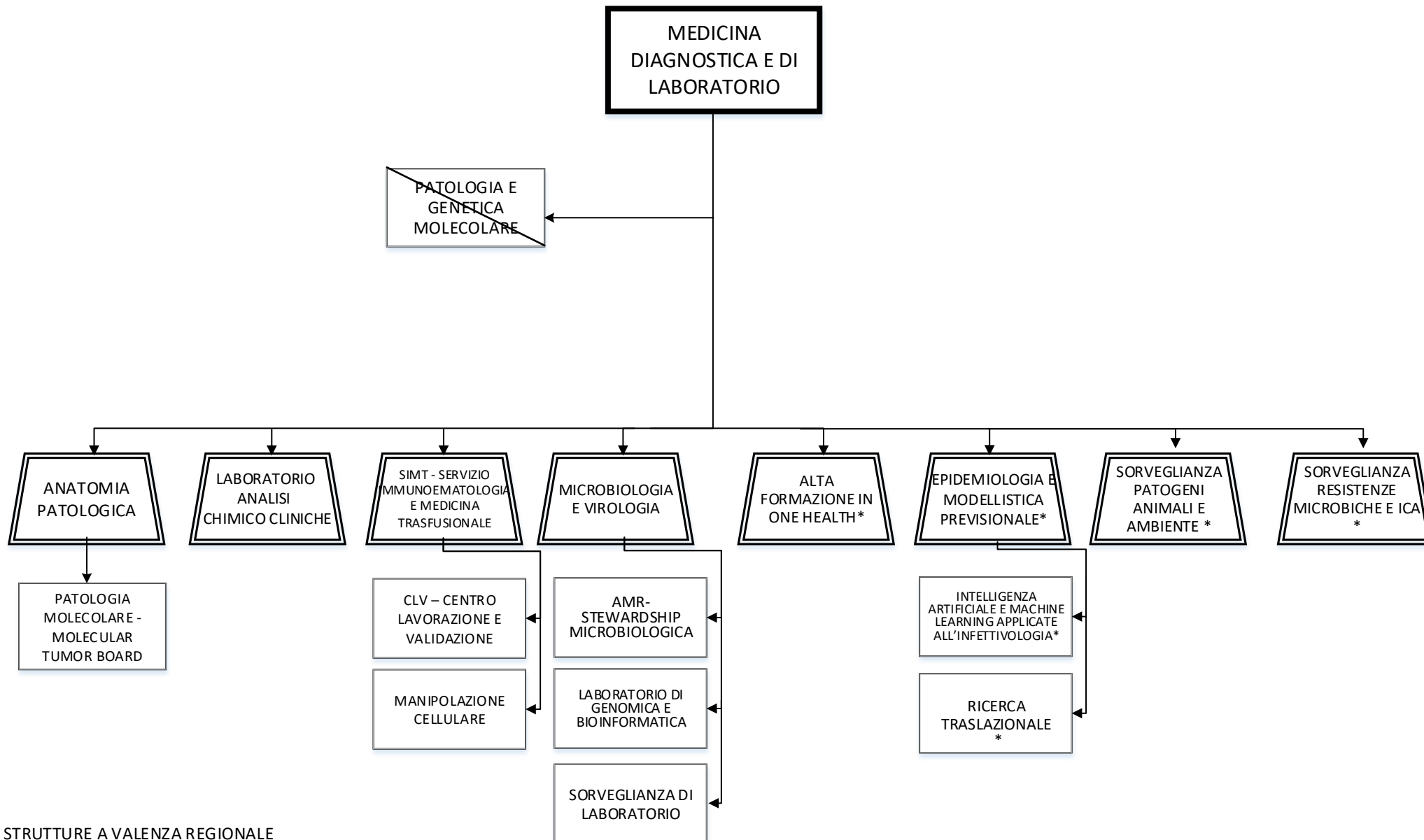




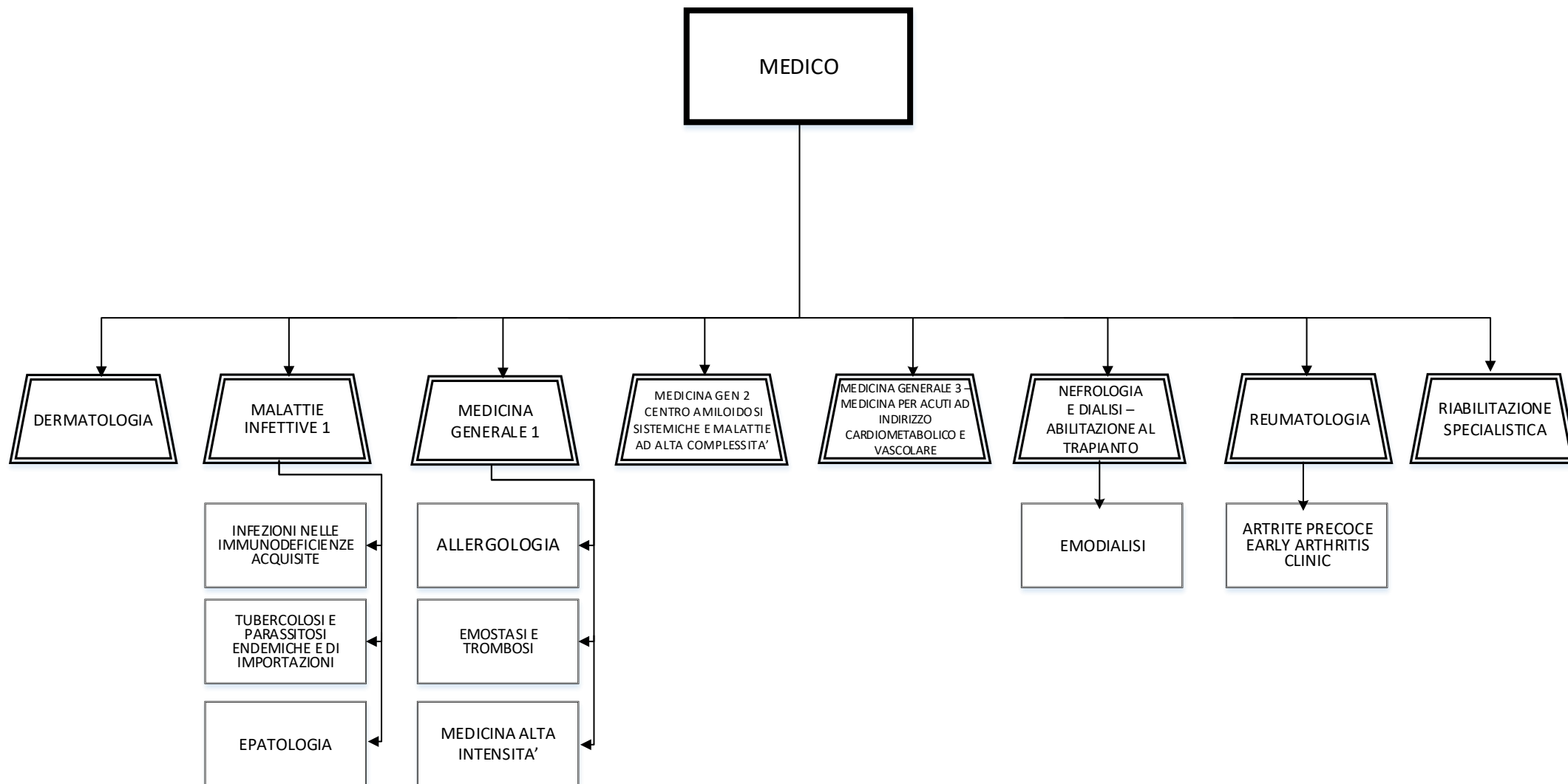


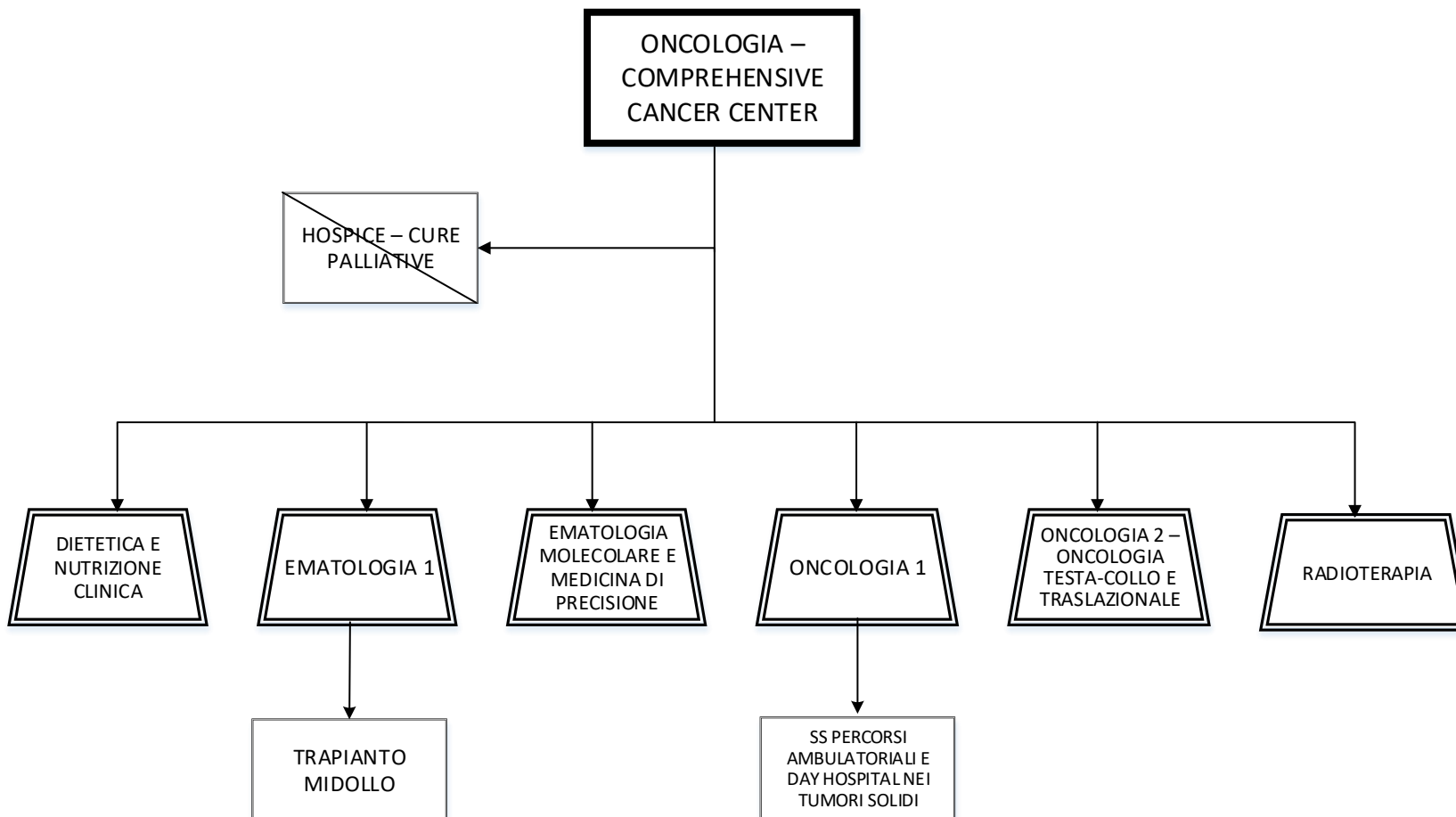
\* CON AFFERENZA FUNZIONALE AL DIPARTIMENTO RICERCA

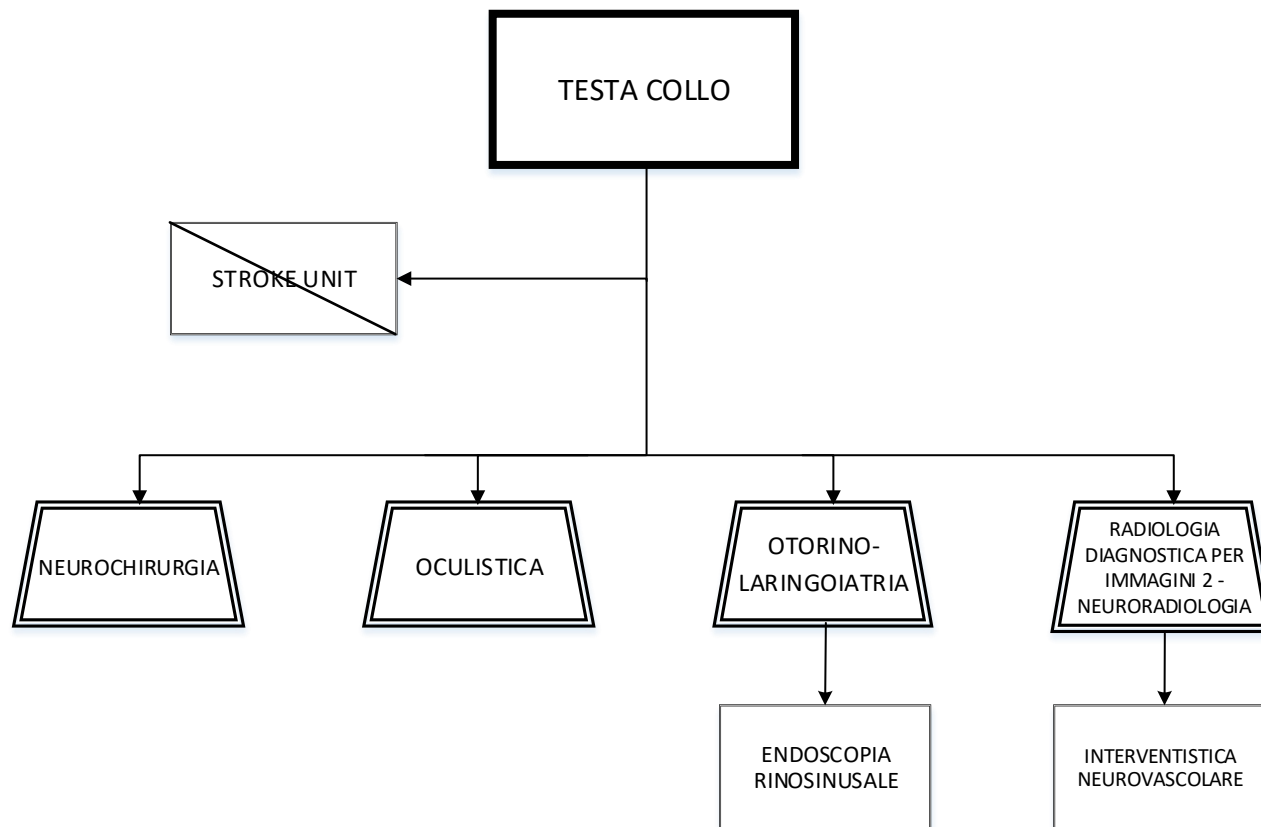


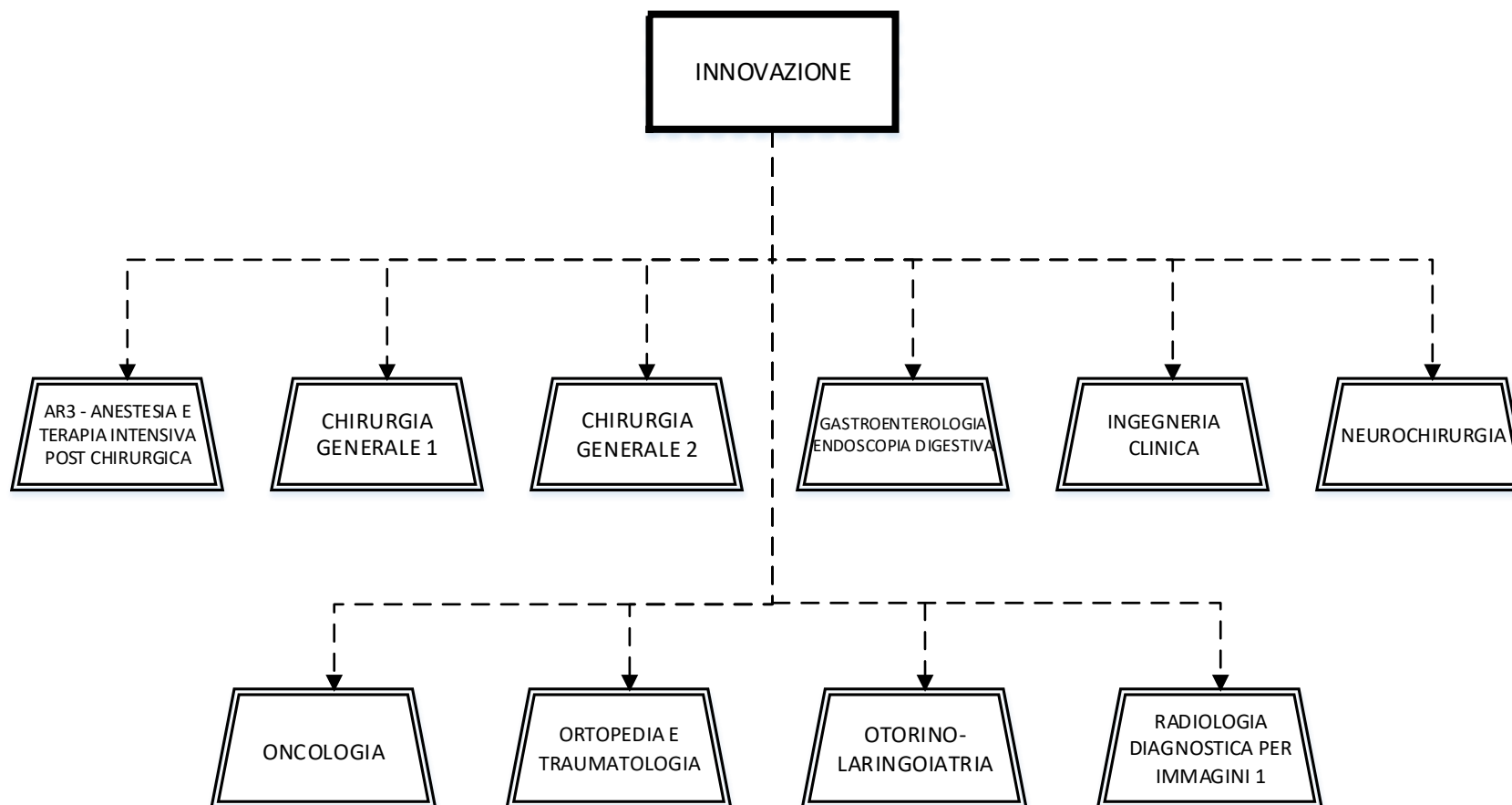


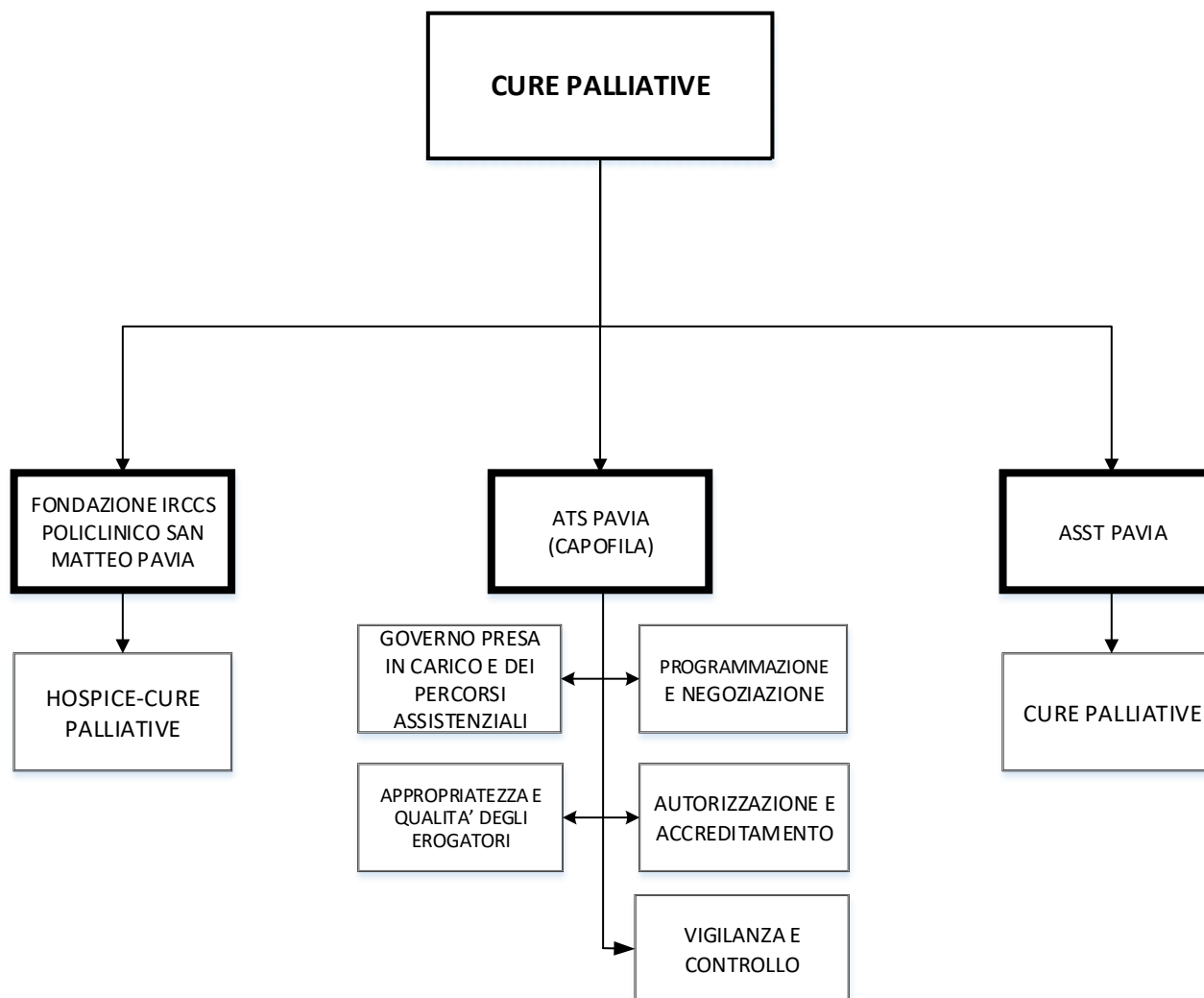
\* STRUTTURE A VALENZA REGIONALE













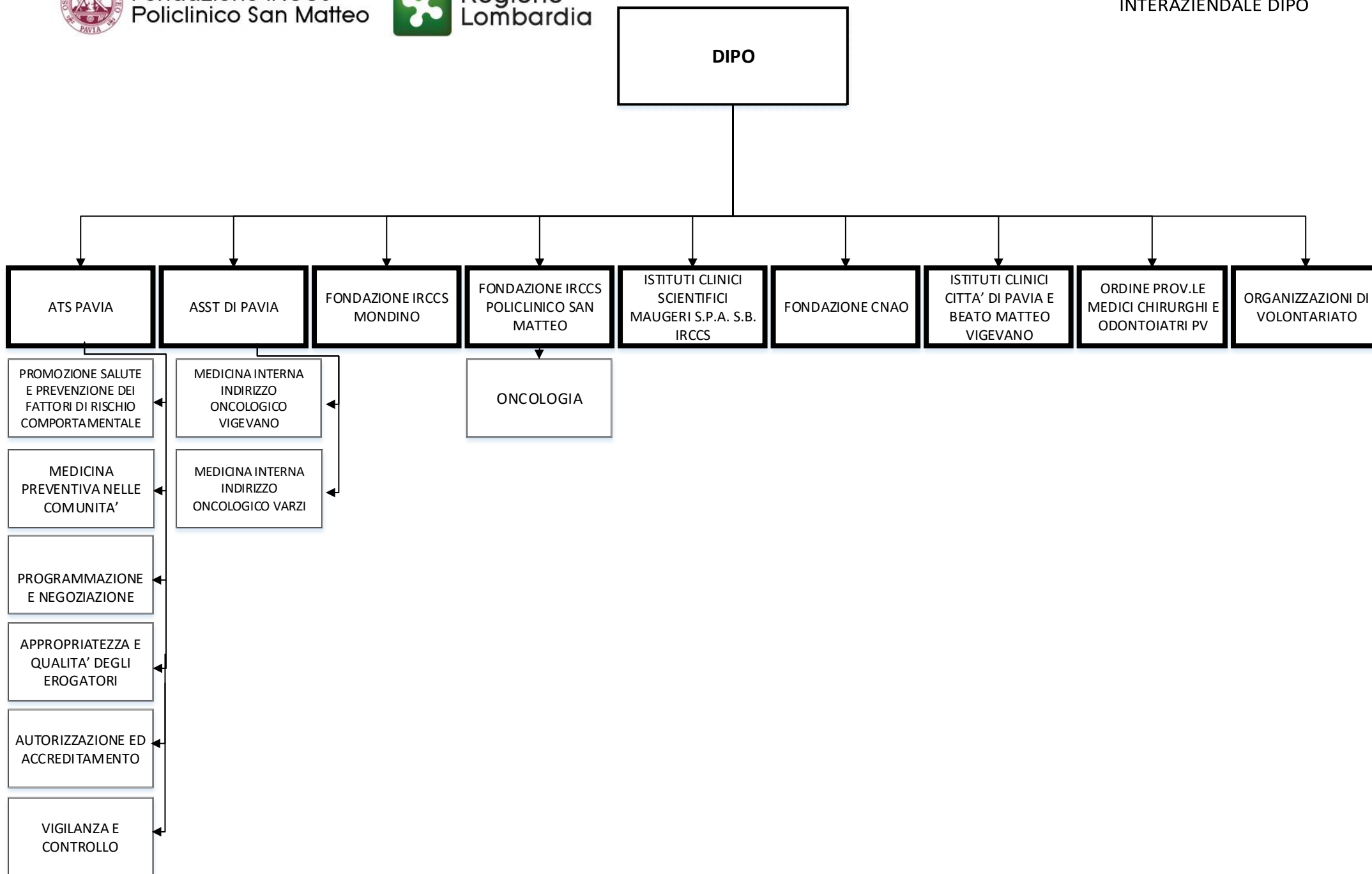
Fondazione IRCCS  
Policlinico San Matteo

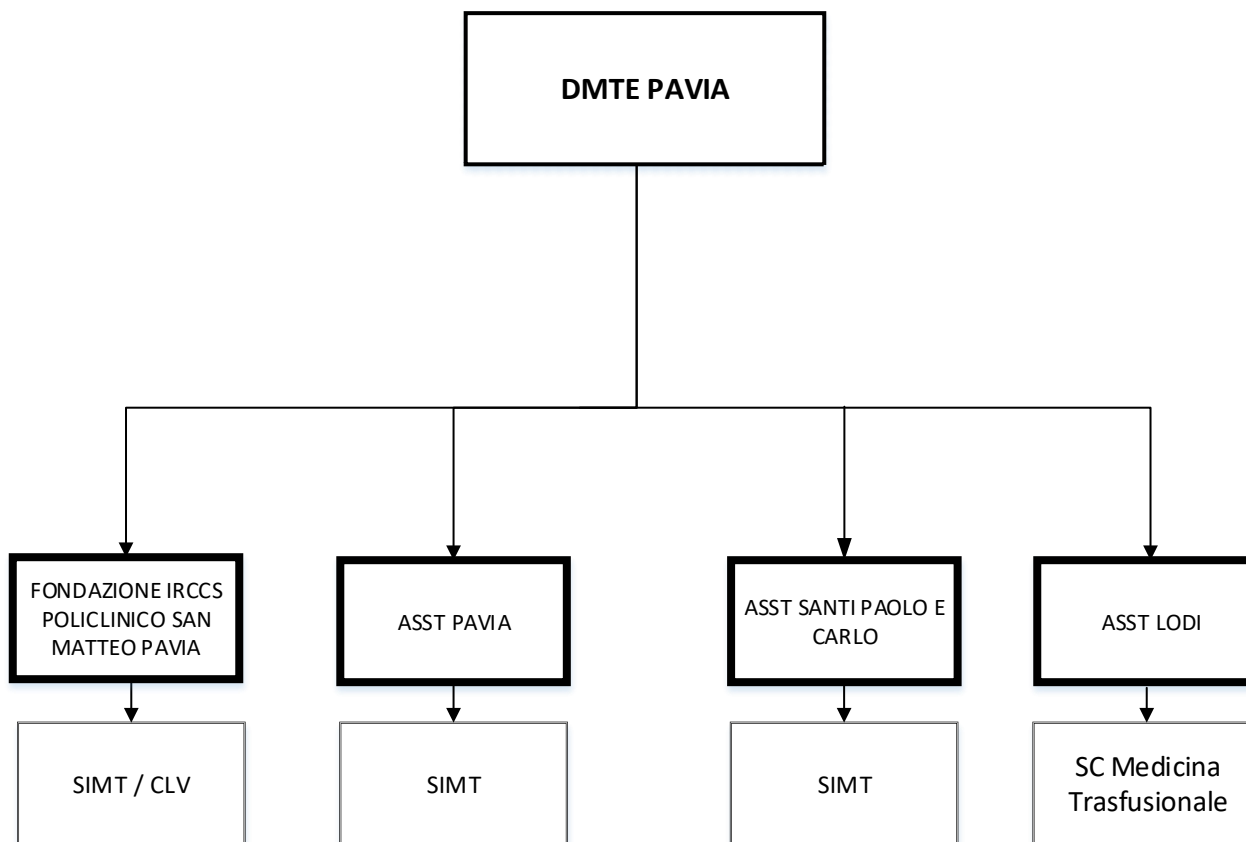
Sistema Socio Sanitario



Regione  
Lombardia

ORGANIGRAMMA  
DIPARTIMENTO  
INTERAZIENDALE DIPO







Fondazione IRCCS  
Policlinico San Matteo

Sistema Socio Sanitario



Regione  
Lombardia

**NEUROSCIENZE**

ORGANIGRAMMA DIPARTIMENTO  
FUNZIONALE SPERIMENTALE  
INTERAZIENDALE DI  
NEUROSCIENZE

**ASST DI PAVIA**

- NEUROLOGIA VOGHERA
- OTORINO-LARINGOIATRIA VIGEVANO
- NUTRIZIONE CLINICA, DIABETOLOGIA E MALATTIE ENDOCRINE
- SALUTE MENTALE PAVESE
- SALUTE MENTALE LOMELLINA
- SALUTE MENTALE OLTREPO'
- PSICOLOGIA CLINICA
- SANITA' PENITENZIARIA

**FONDAZIONE IRCCS  
POLICLINICO SAN  
MATTEO**

- ANATOMIA PATOLOGICA ↔ DIETETICA E NUTRIZIONE CLINICA
- AR1 - TERAPIA INTENSIVA GENERALE ↔ OCULISTICA
- LABORATORIO ANALISI CHIMICO CLINICHE ↔ OTORINO-LARINGOIATRIA
- MICROBIOLOGIA E VIROLOGIA ↔ PEDIATRIA
- PRONTO SOCCORSO E MEDICINA URGENZA ↔ RADIOLOGIA DIAGNOSTICA PER IMMAGINI 2 - NEURORADIOLOGIA
- NEUROCHIRURGIA

**ISTITUTI CLINICI  
SCIENTIFICI  
MAUGERI S.P.A. S.B.  
IRCCS**

- RIABILITAZIONI PER GRAVI CEREBROLESIONI ACQUISITE / UNITA' COMA

**FONDAZIONE  
IRCCS MONDINO**

- NEUROLOGIA DELLE URGENZE ↔ U.O.N.P.I.A.
- NEURONCOLOGIA/NEURO-INFIAMMAZIONE ↔ RIABILITAZIONE POST-STROKE
- DIAGNOSTICA PER IMMAGINI ↔ NEURO-IMMUNOLOGIA
- GENETICA ↔ PARKINSON
- NEUROFISIO-PATOLOGIA ↔ PSICOLOGIA CLINICA
- CENTRO MALATTIE RARE NEUROLOGICHE

**FONDAZIONE  
CNAO**

- LABORATORIO DI RADIOBIOLOGIA ↔ UNITA' DI RADIOTERAPIA
- UNITA' IMAGING
- UNITA' DI FISICA MEDICA
- UNITA' DI BIOINGEGNERIA

